

Sudarshan

CNC Vertical Turret Lathe VTL 800

Versatility with stability



Bharat Fritz Werner Ltd.



Innovations • Partnerships • Values

Sudarshan

CNC Vertical Turret Lathe VTL 800

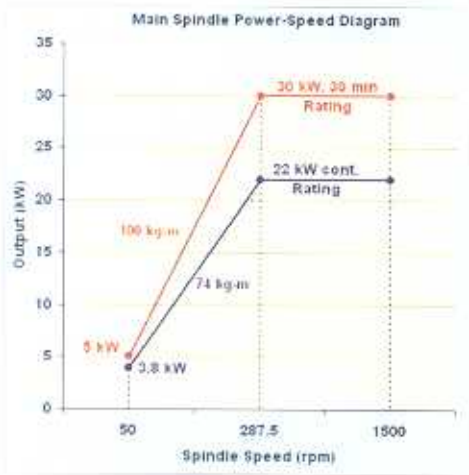
Sudarshan serves your needs for years. Constructed on a single solid casting, Sudarshan is a stable and rigid quality product.

Motor bodies, gearbox housings, pump casings, brake drums, compressor cylinders, bull gears, pump impellers, undercarriage parts for railways – Sudarshan meets a variety of requirements with versatility!

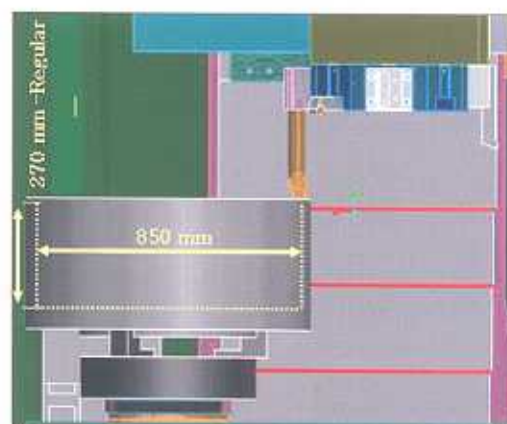
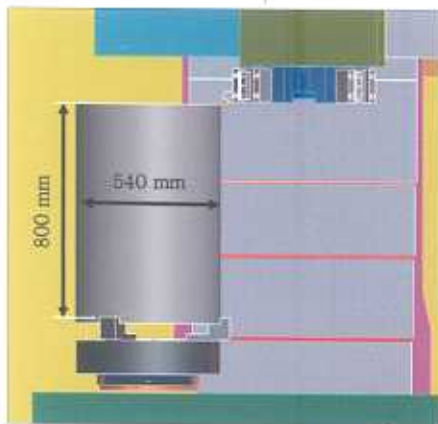
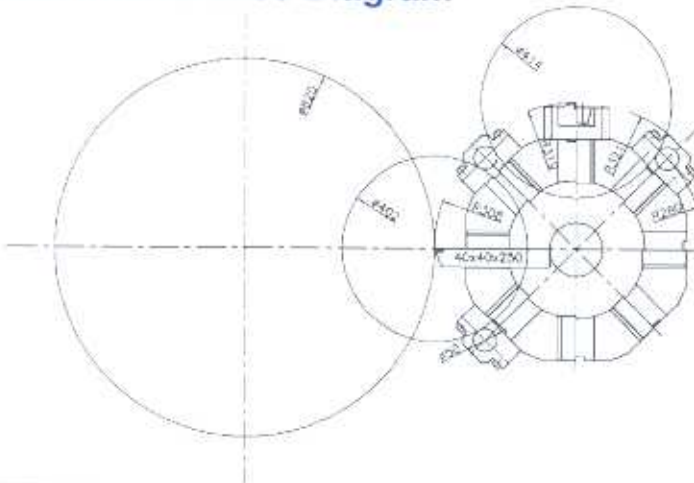
Sudarshan is suitable for machining steel, CI, aluminium and commonly used alloys.

Turning, boring, threading, drilling, keyway milling or a combination of some or all of these operations: you will find Sudarshan giving you an advantage every time!

Spindle Power/ Torque



Tool Interference Diagram





Rear View

Coolant View



CNC FUNCTIONS

- Linear interpolation
- Circular interpolation
- Cylindrical interpolation
- Absolute/ incremental programming
- Canned cycles
- Work piece co-ordinate system
- Back ground editing
- Backlash compensation
- Pitch error compensation
- Polar co-ordinate
- Scaling, mirroring
- Rigid tapping
- History of operator alarms and messages
- Look ahead function
- Custom macro B/ parametric programming
- Simple tool life management
- Multi language display
- Program restart/ block search



CNC Panel

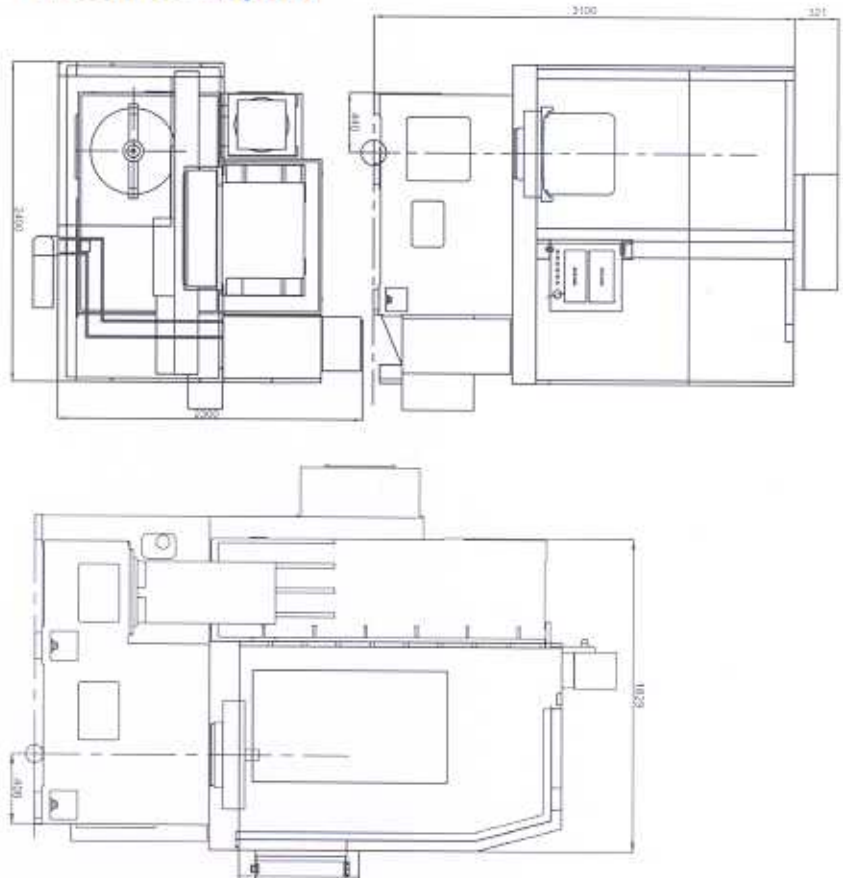
OPTIONS

- Helical interpolation
- Ethernet and data sever facility
- Remote diagnostics

CNC Specifications

FEATURES\ SYSTEM	FANUC Oi-TC
Display	8.4" colour TFT LCD
Simultaneously controllabe axes	3 axes (max. 4 axes)
Minimum input increment	0.001mm, 0.001 deg
Spindle speed command	5-digit S code
Spindle speed override	50% - 120% (in steps of 10%)
Feed override	200% (in steps of 10%)
Feed rate command	4-digit F code
Inch/ mm conversion	Yes
Part program storage capacity	256 kB
Number of part programs	400
Sub program nesting	4 levels
Number of tool offsets	64
Program number/ Sequence number search	Yes
Single block	Yes
Optional stop	Yes
Dry run	Yes
DNC operation	Through RS232C/ PCMCIA card
Run hour and part count	Yes
Help function	Yes
Graphic function	Yes
Direct drawing dimension programming	Yes
High speed skip cycle programming (probe function)	Yes
Manual guide Oi	Yes
Machining condition selection function High speed/High Precision	Yes
Manual pulse generator	Yes
Front PCMCIA card interface	Yes

Machine Layout





TECHNICAL DATA

CAPACITY		
Standard turning diameter	mm	540
Maximum turning length	mm	800
Maximum turning diameter	mm	800 (for 150 length)
Swing over bed	mm	870
Swing over saddle	mm	540
Spindle flange above ground	mm	1100
Maximum weight of the job	kg	1500
Coolant tank capacity	L	300
Hydraulic power pack tank capacity	L	32
Lubrication tank capacity	L	5
SPINDLE		
Standard chuck size	mm	400/ 530/ 630
Spindle nose		A2-11
Spindle bearing inner diameter	mm	190
Spindle speed range	rpm	50 - 1500
Spindle Motor Power (continuous/S3-30min)	kW	22/ 30
Full Power Range	rpm	288 - 1500
TOOLING		
Turret		BTP 160
Number of stations		8
Maximum diameter of boring bar	mm	50
OD turning tool	mm	40 x 40
Turret indexing time	sec	1
X AXIS		
Type of guide way		Linear Motion Type
Stroke	mm	440
Rapid rate	m/ min	20
Ball screw diameter and pitch	mm	40 x 10
Motor torque	Nm	22
Z AXIS		
Type of guide ways		Linear Motion Guide ways
Stroke	mm	830
Rapid rate	m/ min	20
Ball screw diameter and pitch	mm	50 x 10
Motor torque	Nm	22
CNC System	Fanuc Oi TC/ Siemens 802D SL	
INSTALLATION DATA		
Machine dimensions (L x W x H)	mm	2500 x 2500 x 3200
Machine weight	kg	9500
Total connected load	kVA	50

Note: Figures within brackets are optional.

STANDARD ACCESSORIES

- Eight station bi-directional turret, complete with tool disc, boring bar holder, axial tool holder, and sleeves
- Hydraulic power pack
- Coolant tank, manual chip tray, and coolant pump
- Flush coolant system
- Manual pulse generator on machine operator panel
- Levelling screw and seat plates
- Machine lamp
- Foot switch for chuck operation
- Tool kit
- Three tier program lamp

OPTIONAL ACCESSORIES
(CHARGEABLE EXTRA)

- 50 kVA voltage stabiliser
- AC for electrical cabinet
- Ø 400 mm x 3 jaw, power operated, wedge type, closed center chuck with set of hard jaws and soft jaws with closed center rotary cylinder with non-return safety valve operable up to 1500 rpm
- Ø 530mm x 3 jaw, power operated, wedge type, closed center chuck with set of hard jaws and soft jaws with closed center rotary cylinder with non-return safety valve operable up to 1500 rpm
- Ø 630mm x 3 jaw, power operated, wedge type, closed center chuck with set of hard jaws and soft jaws with closed center rotary cylinder with non-return safety valve operable up to 1000 rpm
- Chip conveyor with bin

Bharat Fritz Werner Ltd.

An ISO9001:2000 and ISO14001:2004 Machine Tool Manufacturer

Off Tumkur Road, Bangalore - 560 022, India. Ph: 91-80-28395745/ 39821100
Fax: 91-80-28394816, e-mail: bfwmarketing@bfw.co.in URL: www.bfwindia.com

REGIONAL OFFICES

BANGALORE	Off Tumkur Road, Bangalore - 560 022. Ph: (080) 28395745, 39821208, Fax: (080) 28394816 E-mail: bfwbangalore@bfw.co.in
CHANDIGARH	S.C.O. 907, 1 st Floor, NAC, Manmusa, Chandigarh - 160 101 Ph: (0172) 4649055 E-mail: bfwchandigarh@bfw.co.in
CHENNAI	4G, Concur Plaza, 560 562, Mount Road, Chennai - 600 018. Ph: (044) 24340299, 24343367 Fax: (044) 42132353 E-mail: bfwchennai@bfw.co.in
COIMBATORE	H1, Dandekar Centre (1st Floor), 105B, Aynash Road, Coimbatore - 641 015. Ph: (0422) 2211694 E-mail: bfwcoimbatore@bfw.co.in
HYDERABAD	Flat No 204, 1-11/229, Rahavada Srisaigoda, Apt., Near Shyamala Bldgs., Begumpet, Hyderabad - 600 016. Ph: (040) 27762035 E-mail: bfwhyderabad@bfw.co.in
KOLKATA	C-22, Shreevardhan Complex, RNT Marg, Indira - 452 001
KOLKATA	6, India Exchange Place, Ruby House (6th Floor), Kolkata - 700 001. Ph: (033) 22429334 Fax: (033) 22427286 E-mail: bfwkolkata@bfw.co.in
MUMBAI	206, Rahwal Commercial Complex, II Floor, LBS Marg, Marol West, Mumbai - 400 080. Ph: (022) 25653362, 25653358, Fax: (022) 25653392 E-mail: bfwmumbai@bfw.co.in
NEW DELHI	510, Mahatta Towers, E-Block, Community Center, Jarakpur, New Delhi - 110 058. Ph: (011) 25532210, 25522214, Fax: (011) 25530696 E-mail: bfwdelhi@bfw.co.in
PUNE	BFW House, 124A, H Block, MIDC Pimpri, Pune - 411 018. Ph: (020) 30524538 E-mail: bfwpunefw@bfw.co.in
RAJKOT	SS-86, 3rd Floor, Samrathi Bhasan, Opp. Bombay Garage Petrol Pump, Gandal Road, Rajkot - 360 002

Resident representatives at Awaragabad, Belgium, and Jinhua, China

We are continuously working on the development of our products, the information contained in this brochure is subject to modification.



Innovations • Partnerships • Values

Dealer/ Representative